

GSP9200 Touch[®]

High-Capacity Balancer with Touchscreen Simplicity



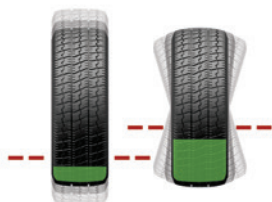
HUNTER
Engineering Company

GSP9200 Touch® balancer at a glance

PATENTED

SmartWeight® Technology

SmartWeight® Balancing Technology



- ✓ Maximizes productivity
- ✓ Improves balance
- ✓ Minimizes weight usage

STANDARD

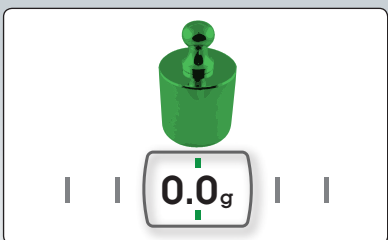
Touchscreen Interface



- ✓ Intuitive design
- ✓ Quickly trains new technicians

PATENTED

eCal Auto-Calibration



- ✓ True "self-calibration"
- ✓ No operator input required





EXCLUSIVE

HammerHead® Option



- ✓ Speeds clip-weight placement
- ✓ Improves balance
- ✓ Illuminates work area

EXCLUSIVE

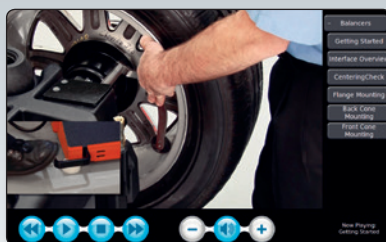
Automatic Mode Detection



- ✓ Mode set automatically
- ✓ Speeds data measurements
- ✓ Reduces data entry errors

EXCLUSIVE

On-Demand Videos



- ✓ Simplifies training
- ✓ Improves results

STANDARD

Bottom-Dead-Center Laser



- ✓ Speeds tape-weight placement
- ✓ Improves accuracy

PATENTED

CenteringCheck®



- ✓ Ensures proper centering
- ✓ Eliminates setup errors

PATENTED

ServoDrive



- ✓ Auto positions wheel
- ✓ Speeds balance process

*GSP9223TOUCH shown with optional HammerHead®, BullsEye® collets and printer**

EXCLUSIVE

Intuitive touchscreen simplifies balance experience



Touching weight value serves wheel to weight location



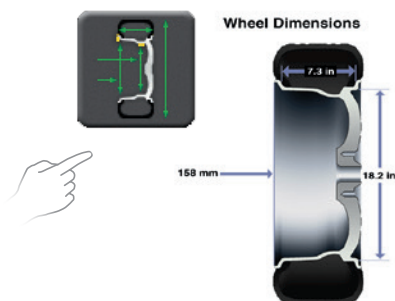
Rim cutaway displays selected weight mode

NEW!

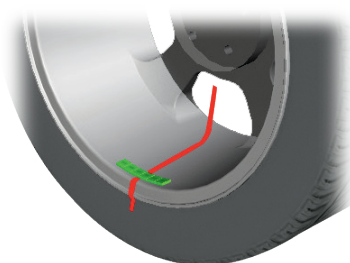


Switch text language with the push of a button

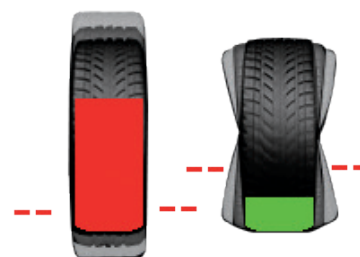
Balancing interface at a glance



One touch to display rim dimensions



TruWeight™ provides live navigation through selection and placement of wheel weights



SmartWeight® panel displays wheel balance condition

Revolutionary **SmartWeight®** by the numbers

4 Modern vehicles are **4 times** more sensitive to static vibration forces than couple or dynamic forces.

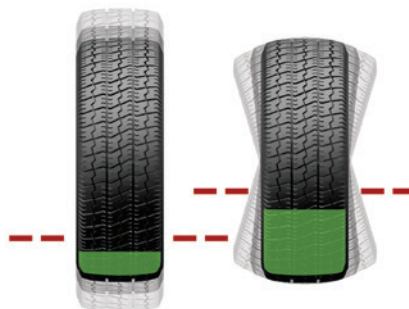
25 SmartWeight saves **25 labor hours** per year with efficient weight applications. *

30 SmartWeight can save **30% or more** in correction weights.

66 Avoid an average of **66 comebacks** per year by using SmartWeight. **

202 An average shop saves **202 kilograms** per year with SmartWeight. ***

SmartWeight® Balancing Technology



SmartWeight Savings					
Lifetime Savings					
Material Savings			Labor Savings		
Grams	1237697	Minutes		8038.0	
Kilograms	1237.7	Hours		134.0	
Boxes (mixed)	1283.7				
Savings	€ 10 085,52	Savings		€ 2 044,34	
Total		€ 12 129,37			
Material Savings per Spin			Labor Savings per Spin		
Grams	22.1	Seconds			
Savings	€ 0,18	Savings		€ 0,03	

Watch Your Investment Grow!

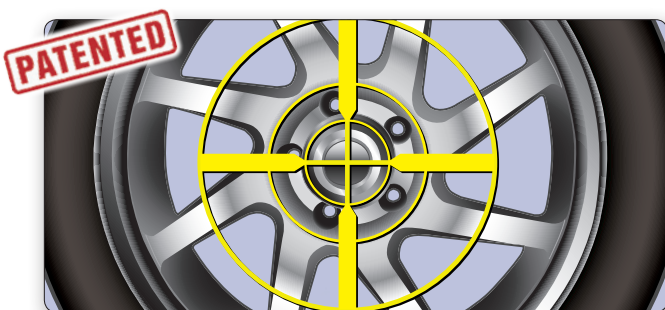
✓ See weight and labor savings based on **your** shop's numbers

* Time-savings are calculated from comparing single- and no-weight applications when using SmartWeight versus the typical two-weight application of standard balancers.

** Comeback avoidance is calculated based on residual static imbalance left by standard balancers versus SmartWeight balancers.

*** Calculations based on 10 vehicles per day in a standard working year. Performance differences are those of a SmartWeight-equipped balancer vs. a traditional wheel balancer.

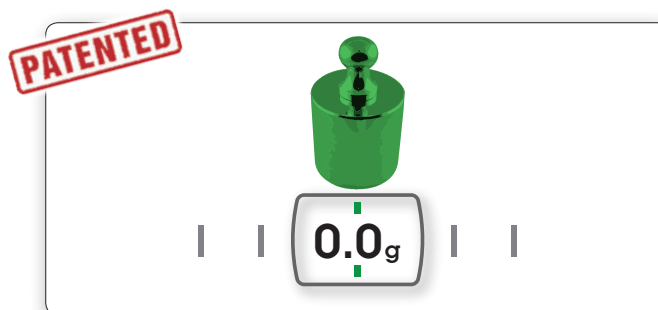
Exclusive features make balancing faster and easier



CenteringCheck®

Balancer will tell you if the wheel is properly centered before you proceed with the work.

✓ **Eliminate the #1 cause of comebacks**



eCal Auto-Calibration

✓ True "self-calibration"

✓ No operator input required

Exclusive features make balancing faster and easier

EXCLUSIVE

On-Screen Instruction

High-definition videos provide instruction on a variety of balancing and tire changing topics.

- ✓ Covers basic techniques to more advanced procedures
- ✓ Instant access, easy navigation
- ✓ On-site training for your technicians



Technicians are guided with helpful tips and timesaving procedures.

EXCLUSIVE



Live 3D graphics

Interactive display intuitively guides technicians through balancing procedures.

Decreases training time

PATENTED



SmartSpoke®

Locates optimal adhesive weight location behind one wheel spoke instead of multiple weights and spokes.

Wheel clamping options

The GSP9200® Touch balancer is offered with one of the following factory-installed wheel clamping options. See the model configuration chart below for ordering information.



Pneumatic AutoClamp



Quick-Thread wing nut



Standard wing nut

Popular equipment upgrades



HammerHead® top-dead-center laser option

- ✓ Greater weight placement accuracy to avoid mistakes
- ✓ More single-spin balances improve productivity and shop profitability
- ✓ Overhead fluorescent light illuminates work area

Wheel lift option

- ✓ Quickly and safely service heavy, oversized wheels
- ✓ Compliant platform permits easy alignment
- ✓ Improve centering performance



Printer kit with storage shelf option*

- ✓ Print SmartWeight results
- ✓ Win more approvals with clear and informative printouts



* Printer model may vary.

Optional BullsEye® centering system



- ✓ Optimize centering
- ✓ Prevent wheel damage

Specifications



GSP9223TOUCH shown with optional equipment

Power Requirements

215-240V, 3 amp, 50/60 Hz, 1 ph (Power cable includes: NEMA 20 amp plug, L6-20P)

Air Supply Requirements

7-12 bar (100-175 psi)*

Capacity

Rim Width 38 mm to 508 mm (1.5 in to 20 in)

Rim Diameter 254 mm to 762 mm (10 in to 30 in)**

ALU 191 mm to 965 mm (7.5 in to 38 in)**

Max. Tire Diameter 965 mm (38 in)

Max. Tire Width 508 mm (20 in)

Max. Assembly Weight 68 kg (150 lbs)

Imbalance Resolution ± 1.0 g (0.05 oz)

Placement Accuracy 512 positions, $\pm 0.7^\circ$

Balancing Speed 150 rpm

Motor

Programmable drive system and DC motor

* Models only equipped with AutoClamp option.

** Extreme wheel sizes may require manual data entry.

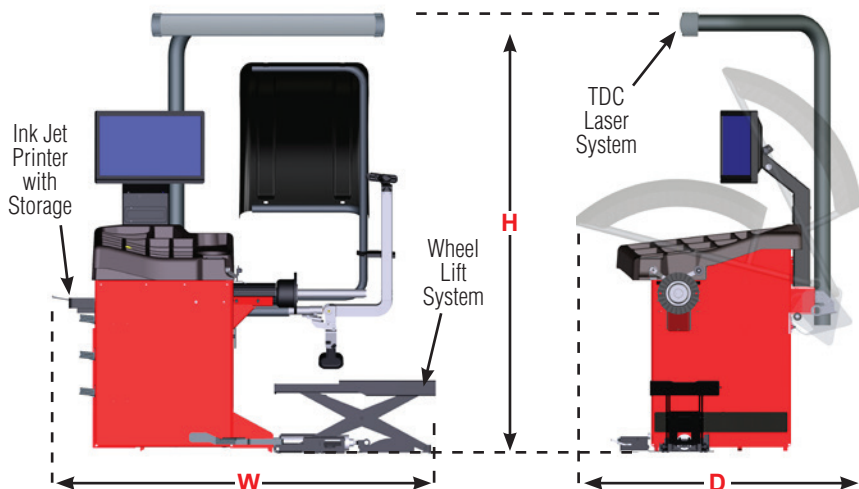
Models

	GSP9222TOUCH	GSP9223TOUCH	GSP9224TOUCH
Standard wing nut	✓		
AutoClamp® System		✓	
Quick-Thread wing nut			✓
HammerHead® System	Optional	Optional	Optional
Ink Jet Printer w/Storage	Optional	Optional	Optional
BullsEye® Centering System	Optional	Optional	Optional
Width (W)	1435 mm*† 56.5 in	1435 mm*† 56.5 in	1435 mm*† 56.5 in
Height (H)	1854 mm** 73 in	1854 mm** 73 in	1854 mm** 73 in
Depth (D)	1575 mm 62 in	1575 mm 62 in	1575 mm 62 in
Weight	220 kg 486 lbs	223 kg 492 lbs	215 kg 475 lbs

*1524 mm (60 in) with printer

**2184 mm (86 in) with TDC Laser System

† 1854 mm (73 in) with wheel lift



Because of continuing technological advancements, specifications, models and options are subject to change without notice.

HUNTER
Engineering Company

www.hunter.com

11250 Hunter Drive, Bridgeton, MO 63044 USA
Tel: +1 314-731-3020 Fax: +1 314-731-0132
Email: international@hunter.com

0615BHE