

# **WinAlign® HD Alignment Systems**

**Fast and accurate wheel alignment for multi-axle trucks**



# New DSP760T alignment sensors

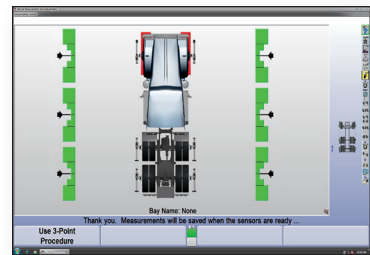
Hunter's new DSP760T heavy-duty alignment sensors reduce setup time and provide accurate alignment readings.



*PATENTED*

## Rolling Compensation

- ✓ No jacking required
- ✓ Compensate all sensors at once
- ✓ Short roll comp



*PATENT PENDING*

## Six Sensors Live

- ✓ Three axles live
- ✓ See all measurements at once
- ✓ Diagnose tire wear conditions
- ✓ Reduce setup time through minimal sensor movement



*PATENT PENDING*

## Truck Pusher

- ✓ Easily move vehicle for rolling comp
- ✓ Rechargeable battery
- ✓ Doubles as a wheel chock



*PATENTED*

## Fully Integrated Alignment

- ✓ Auto-locking turnplates
- ✓ Built-in turnplate bridges for rolling comp



*STANDARD*

## Cordless Operation

- ✓ No cumbersome cables
- ✓ Hot-swappable batteries



*PATENT PENDING*

## Trailer Alignment

- ✓ Align without unhooking from tractor
- ✓ Align using optional kingpin adaptor without tractor
- ✓ Accurate to 15.24 m (600 in.)



*STANDARD*

## Self-Centering Adaptors

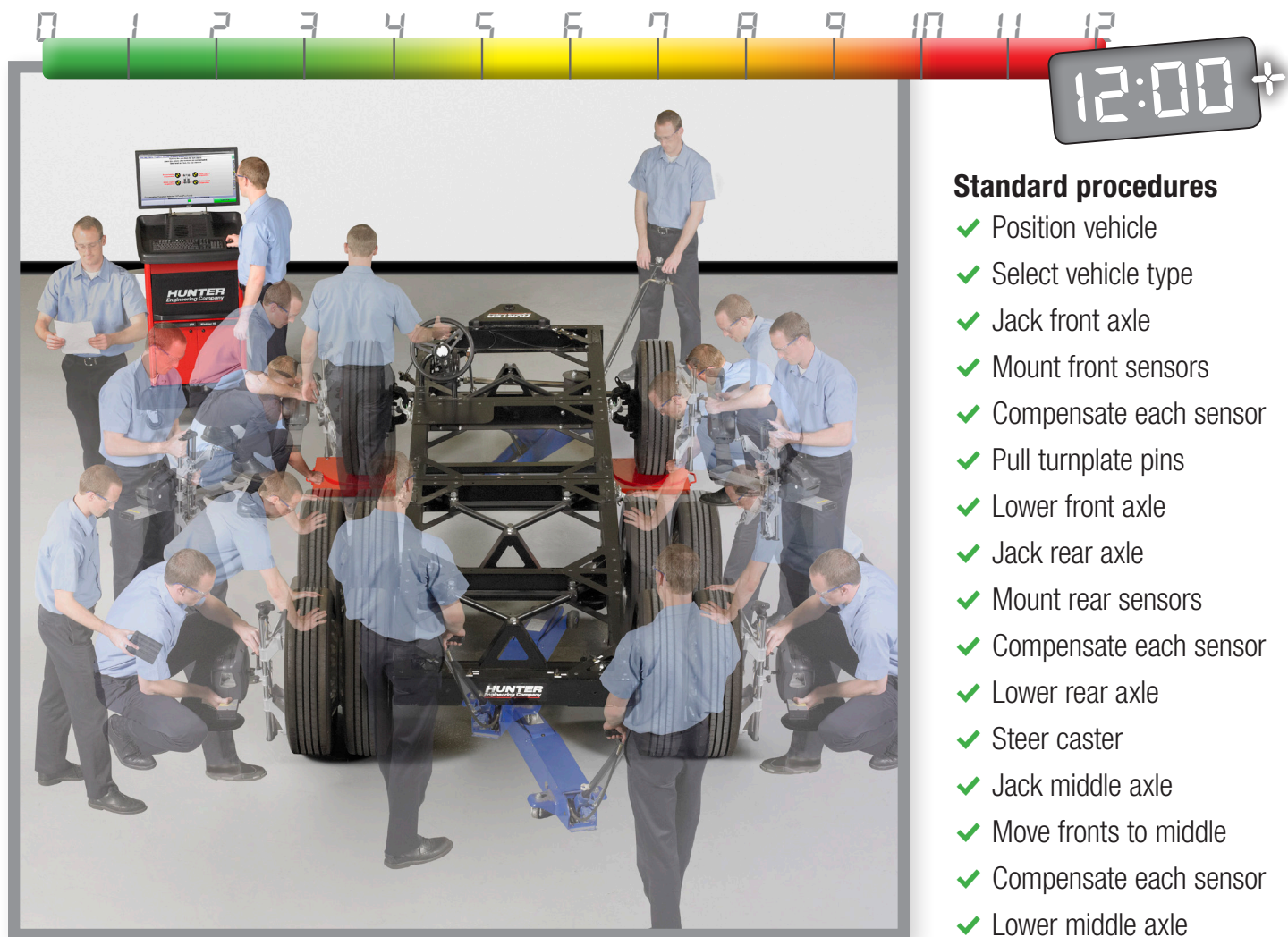
- ✓ High versatility for trucks and buses with low-hanging bumpers or air dams
- ✓ Fits wheels 15 to 28 inches in diameter



## Rugged

- ✓ Integrated electronic components enhance reliability
- ✓ Lightweight, rubberized design
- ✓ Impact-prone areas protected by integrated rubber bumpers

# Previous setups used valuable shop time...



## Standard procedures

- ✓ Position vehicle
- ✓ Select vehicle type
- ✓ Jack front axle
- ✓ Mount front sensors
- ✓ Compensate each sensor
- ✓ Pull turnplate pins
- ✓ Lower front axle
- ✓ Jack rear axle
- ✓ Mount rear sensors
- ✓ Compensate each sensor
- ✓ Lower rear axle
- ✓ Steer caster
- ✓ Jack middle axle
- ✓ Move fronts to middle
- ✓ Compensate each sensor
- ✓ Lower middle axle
- ✓ Print results

**12:00-15:00 Total**

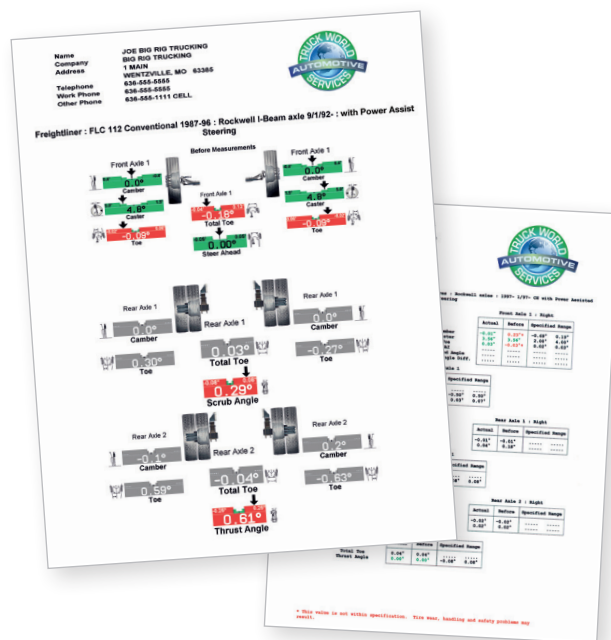
# ...Today, present your results in just 4 minutes!



## New procedure

- ✓ Position vehicle
- ✓ Select vehicle
- ✓ Mount sensors
- ✓ Roll forward to compensate
- ✓ Steer caster
- ✓ Print results

**4:00 Total**



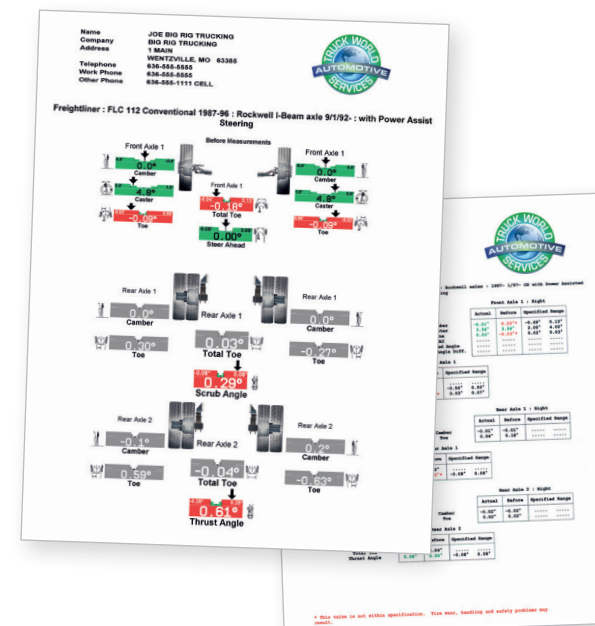
## ACTIVITY TRACKER

3 axles jacked to compensate

2 sensor movements

203 total walking steps

0+ additional minutes required before adjustment



## ACTIVITY TRACKER

0 axles jacked to compensate

0 sensor movements

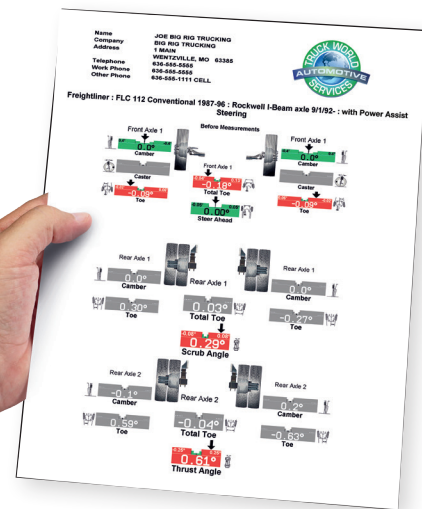
01 total walking steps

0 additional minutes required before adjustment

## Fast printouts in 4 minutes!

Use detailed printouts featuring your company's logo to sell more work.

# Check tire wear angles in under 3 minutes!



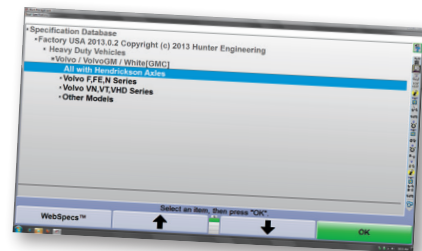
Use detailed printouts featuring your company's logo to sell more work

- ✓ Get measurements on three axles
- ✓ Toe and camber on front axle
- ✓ Thrust and scrub on rear axles

## Step-by-step procedure for HD alignment checks



1. Pull in vehicle



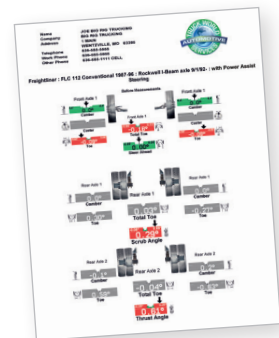
2. Recall the specs



3. Mount six sensors



4. Roll vehicle forward



5. Retrieve the printout



6. Sell the service

# Console configurations

	WinAlign HD
Industry-leading hardware and software	Intel Core i3 Processor 3.70 GHz (or greater) ✓
	4 GB of DDR3 SDRAM Memory ✓
	240 GB SSD hard drive (or greater) ✓
	DVD-RW/CD-RW drive ✓
	Windows® 10 operating system ✓
	Car and light truck software* ✓
	2 years of free VID updates ✓
	2 years of free HunterNet access ✓
	Wireless network module Optional
	AlignGuide training Optional
	DSP760T or DSP740T sensor ✓
	Rolling compensation ✓
	Truck Pusher Optional

\* Passenger car alignment sensors required.



WA670E  
Shown with optional 27 inch LCD monitor



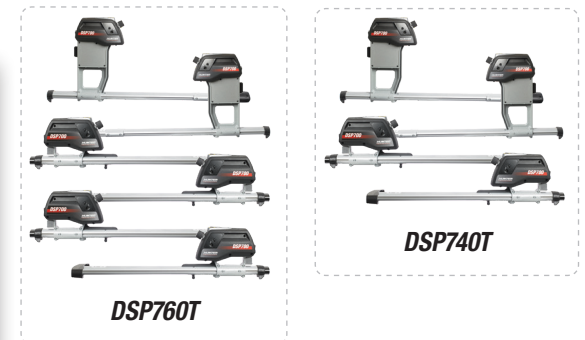
WA570E  
Shown with optional 27 inch LCD monitor



WA560E  
Shown with optional 27 inch LCD monitor

# DSP700T sensor features

	DSP760T	DSP740T
Axles live	3	2
High-speed wireless radio communications	✓	✓
Pro-Comp® continuous compensation	✓	✓
Rolling compensation	✓	✓
Level Reminder® on-screen leveling	✓	✓
Sensor locking mechanism	✓	✓
Interrupted measurement retention	✓	✓
Light-weight construction	✓	✓




STANDARD

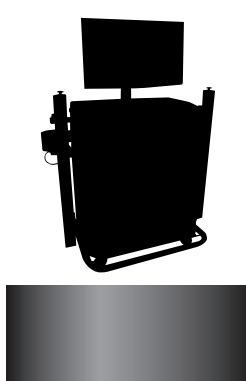
### Self-centering wheel clamps

Standard wheel clamps allow clamping of wheels 15-28 in. diameter.

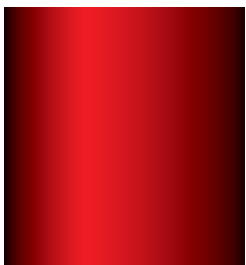
# When it comes to heavy-duty software, WinAlign® HD is unmatched!

The importance of software...



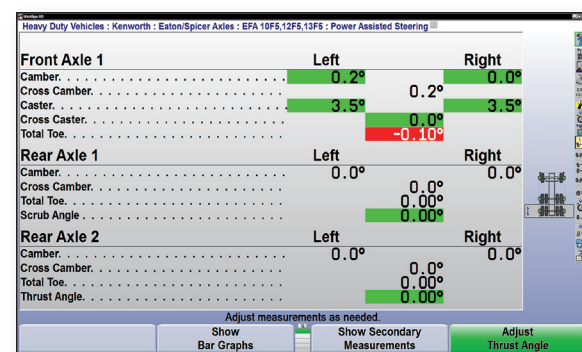


Ordinary systems simply present alignment readings



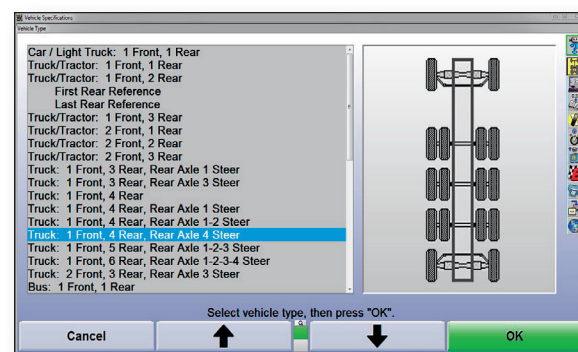
WinAlign HD maximizes profit and productivity

- ▶ The **most extensive** vehicle information database.
- ▶ **Vehicle-specific** procedures guide your technicians with **step-by-step** instructions.
- ▶ **Patented power tools** complete the work accurately the first time, every time.
- ▶ **WinAlign HD** maximizes profit and productivity in your alignment bay.



## PATENTED ExpressAlign®

Perform every alignment with a streamlined procedure. ExpressAlign analyzes each job and presents the optimal action sequence with the minimum steps required.

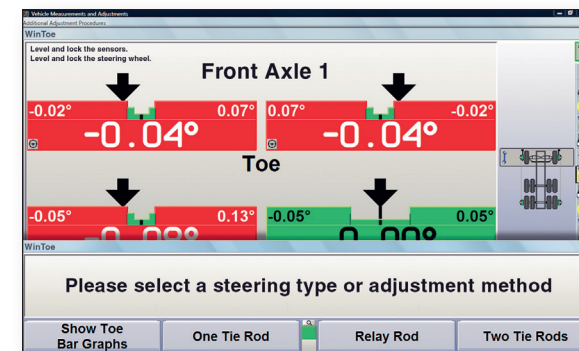


## 60+ Axle configurations possible

WinAlign HD software supports more than 60 customized truck, trailer and bus alignment procedures as well as passenger car and light truck alignment.

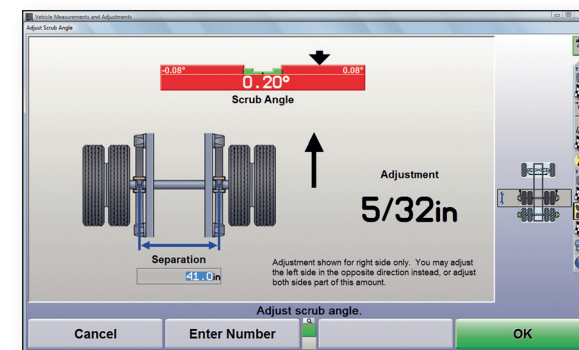
### Additional power features for light-vehicle work includes:

- CAMM® feature
- Tools and Kits database
- Digital photos/videos\*
- ExpressAlign® procedure
- Shim Select® II feature
- Work Management features



## PATENTED WinToe®

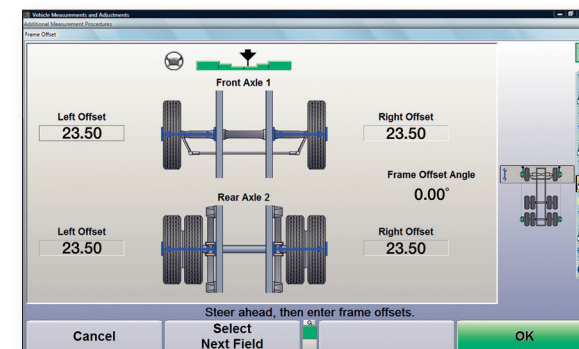
Ensure a straight steering wheel every time without repeated adjustments or using a steering wheel holder. Works with all vehicles on the road today, from cars to Freightliners.



## PATENTED

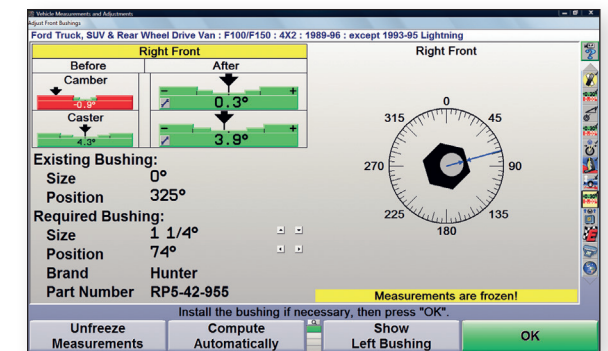
## Rear Axle Adjustment Calculations

Cut adjustment times in half for rear axle corrections. Graphics let you get it right on the first try.



## Frame Offset Angle Display

Measure frame offset angle and calculate adjustments to frame centerline, if a frame reference alignment is needed.



## PATENTED

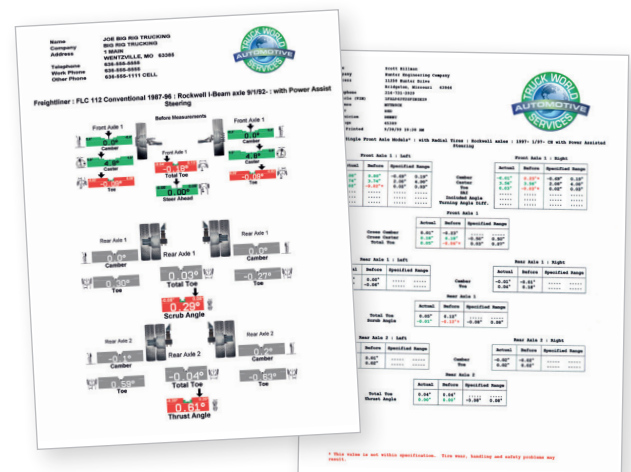
## Automatic Bushing Calculator®

Calculate the proper bushing size and position adjustment without wasting time with a zero bushing. Eases the process of servicing Ford F-150-450's.



## Adjustment Videos

Strengthen technician competency and extend profit opportunities with helpful adjustment videos.



**Before and after alignment results can be printed in color.**

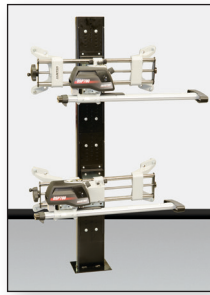
## Accessories



**PATENT PENDING**

### Truck Pusher – 20-2855-1

Hunter's battery operated pusher easily moves the vehicle for accurate rolling compensation.



### Sensor storage

Post: 20-2886-1, Cart: 20-2850-1

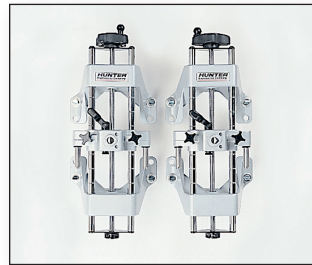
Sensor storage post (left) or cart (right) provides convenient access and storage for alignment instruments.



### Remote indicator

Cordless: 20-2882-1E

Remote indicator is designed to provide the operator with complete control while making adjustments to the vehicle.



### Mini self-centering wheel clamps

175-284-1 (2 required)

Allow mounting sensor to hub center of front rims.



### Frame reference support bar

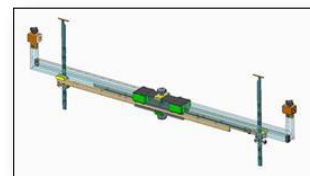
208-34-1



### Heavy-duty frame dowel adapter

20-3279-1

For Mercedes, Iveco Stralis, MAN TGA, Renault Magnum, Euro



### Frame gauge kit

20-3184-1

Includes 2 adaptors, 4 short frame hooks, and 4 long frame hooks.



### Trailer gauge

221-738-1

Trailer alignment gauge tool mounts sensors to the trailer kingpin. Trailer axles are adjusted to centerline.



### Trailer tow eye adapter

175-486-1



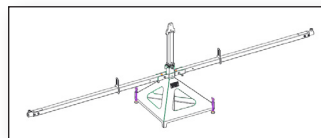
### Trailer king pin adapter

175-485-1



### Bus body reference stands – 20-3246-1

Includes 4 stands



### Trailer dolly

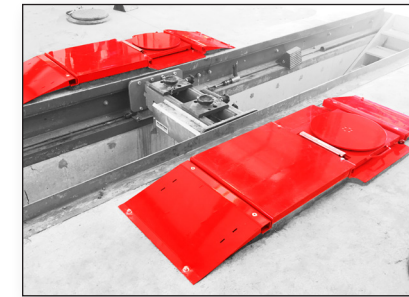
20-3161-1

## Turnplate options for high-volume traffic

- ✓ Adjustable track width from half-tons to Class 8
- ✓ 10,000 kg (22,000 lbs) per axle
- ✓ Built-in turnplate bridges for rolling comp



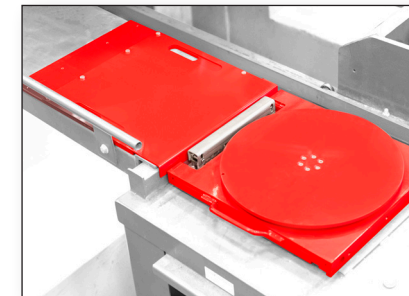
Lock turnplates with a switch or automatically through an FIA-equipped aligner.



### Surface-Mount — align heavy-duty vehicles on your shop's floor

- ✓ Permanent installation
- ✓ Accommodates existing pits

20-3291-1 PowerSlide™



### Rack-Mount — breathe new life into your existing rack

- ✓ Compatible with RKHD, PT, PE, and PF model racks
- ✓ Perform Quick Checks and alignments quicker and easier

20-3334-1 PowerSlide™

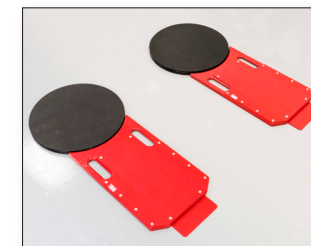


### Flush-Mount — great for new construction or shop remodel

- ✓ Level profile reduces tripping hazards
- ✓ Clean installation and smooth approach

20-3294-1 PowerSlide™

## Other turnplate options



### Portable Turnplates

20-3271-1

- ✓ Multiple bays
- ✓ Multiple steer axles (multiple sets required)
- ✓ Mobile alignment service

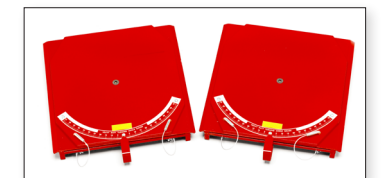
✓ 10,000 kg (22,000 lbs.) per axle

Aluminum construction with ball bearing rotation and polymer translation plates

### Traditional Pinned Turnplates

Not suitable for rolling compensation

- ✓ Low-cost solution
- ✓ Matching legacy Hunter® turnplates



# Ordering Guide

## 1. Choose your cabinet model

<b>WA670E</b>	<b>Standard cabinet accessories:</b> Steering wheel holder Brake pedal depressor
<b>WA570E</b>	
<b>WA560E</b>	
	<b>Power Requirements:</b> 115V or 230V, 1-ph, 50/60 Hz

## 3. Choose additional optional accessories

<b>20-2855-1</b>	Truck pusher
<b>CTN-1757</b>	Printer (USB)
<b>CTN-1833</b>	LCD monitor (27 inch) with mounting bracket
<b>CTN-1834</b>	LCD monitor (24 inch) with mounting bracket
<b>20-2871-1</b>	Mounting bracket for 24-27 in. monitor
<b>20-2910-1</b>	Hand-held XF radio remote control kit (For use with WA560E, and WA510E. Included with WA570E and WA670E.)
<b>20-2880-1-E</b>	Plus cordless remote indicator
<b>20-2881-1-E</b>	Icon remote indicator
<b>20-2882-1-E</b>	Icon cordless remote indicator
<b>20-3291-1</b>	Heavy-duty turnplates (surface mount) with PowerSlide™
<b>20-3334-1</b>	Heavy-duty turnplates (rack mount) with PowerSlide™
<b>20-3294-1</b>	Heavy-duty turnplates (flush mount) with PowerSlide™
<b>25-24-1</b>	Heavy-Duty mechanical turning angle gauges (2 required)

## 2. Choose your alignment sensors

<b>DSP760T</b>	6 cordless optical sensors with 6 self-centering wheel adaptors, 6 storage brackets, 2 sensor shaft extensions
<b>DSP740T</b>	4 cordless optical sensors with 4 self-centering wheel adaptors, 4 storage brackets, 2 sensor shaft extensions

<b>20-2886-1</b>	Truck 2-sensor storage post with recharge power
<b>20-2850-1</b>	Truck 6-sensor storage cart with recharge power
<b>20-2902-1</b>	Hub center adapters with storage brackets (2 each)
<b>69-1025-2</b>	Equipment cover
<b>221-646-1</b>	Heavy-duty frame offset tool
<b>208-34-1</b>	Frame reference support bar
<b>20-3279-1</b>	Heavy-duty frame dowel adapter
<b>20-3184-1</b>	Frame gauge kit
<b>221-738-1</b>	Trailer guage
<b>175-486-1</b>	Trailer tow eye adapter
<b>175-485-1</b>	Trailer king pin adapter
<b>20-3161-1</b>	Trailer dolly
<b>20-1473-1</b>	Trailer dolly alignment kit
<b>20-3246-1</b>	Bus body reference stands (4 each)

**HUNTER**  
**Engineering Company**

[www.hunter.com](http://www.hunter.com)

11250 Hunter Drive, Bridgeton, MO 63044, USA  
Tel: 1-314-731-3020, Fax: 1-314-731-0132  
Email: [international@hunter.com](mailto:international@hunter.com)